

**PORSCHE®**

Colors and interior trim

RJS

**THE OPPORTUNITY TO  
PERSONALIZE YOUR  
NEW PORSCHE BEGINS  
WITH THIS BROCHURE.**

For 1992, to echo a tradition spanning nearly 50 years, Porsche again offers an unparalleled breadth and depth of colors and interiors.



*"PORSCHE" style fabric in Classic Gray*

**From traditional to custom, the choice is yours.**

There are standard, metallic and "to sample" exterior finishes. Standard and custom interiors, in combinations of leatherette, cloth and leather. Or, you may order your new Porsche with the superb

personal touches unique to Porsche Exclusive, once available only to European customers.

Some believe a Porsche should be Guards Red with black leather seats and a leatherette interior. If you agree, the choice is simple, and you will become another delighted owner of a

Guards Red Porsche. However, you may find it tantalizing to know that there are many one-of-a-kind Porsches in the world. Porsches painted unusual colors, Porsches fitted with custom interiors – all created at Zuffenhausen, where craftsmanship inspires legends.

STANDARD INTERIORS:  
EXAMPLES...

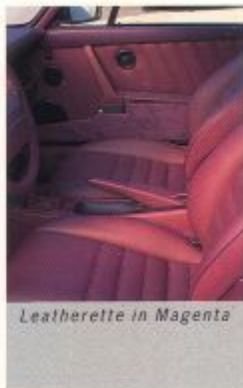
IMAGES FROM PORSCHE'S  
EXCLUSIVE FACTORY



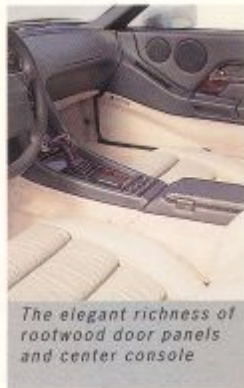
*Multi-color Fabric in Classic Gray*



*Interior in your choice of color, with seat piping in a complement color*



*Leatherette in Magenta*



*The elegant richness of rootwood door panels and center console*



*Leatherette Interior in Cobalt Blue, seats in Partial Leather*

METALLIC FINISHES

---



1/2/3/  
4/8/14/  
15/16/

Z8 Metallic Black



1/4/13/  
15/

G7 Metallic Coral Red



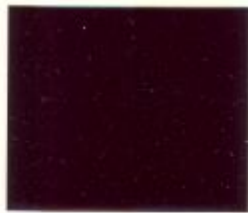
1/4/8/  
15/

N7 Metallic Amazon Green



1/15/  
16/

N9 Metallic Oak Green



1/8/9/  
11/12/15/

F9 Metallic Amethyst



4/6/7/  
10/13/  
15/

F6 Metallic Cobalt Blue



1/3/14/  
15/

Q9 Metallic Slate Gray



6/7/8/  
13/14/  
15/

F8 Metallic Midnight Blue



1/6/13/

F4 Metallic Horizon Blue



1/6/8/  
13/14/

A8 Metallic Polar Silver

Selecting colors and interiors for each of these special Porsches began with the question, "What are the possibilities?" The answer: "Almost anything!" This brochure is provided to stimulate your thinking as you go about the enviable task of designing your new Porsche. It is far from all-inclusive; the samples pictured are a cross-section of what is possible.

Your authorized Porsche dealer will be pleased to assist you in matching a Porsche precisely to your personal specification. The choice is yours.

Sometimes it helps to know what a design professional would choose. Porsche's design studio at Weissach has developed recommended interior colors to complement the various exterior colors. Each exterior color in the brochure is accompanied by one or more numerals; these correspond with various recommended interiors. The removable interior color cards may assist you in determining an exterior/interior color combination that is especially appealing.



A1 Black

1/ 2/ 3/  
4/ 5/ 8/  
14/ 15/ 16/



M1 Signal Green

1/ 4/ 13/  
15/



G1 Guards Red

1/ 4/ 13/  
15/



N4 Mint Green

1/ 4/ 13/  
15/



P5 Grand Prix White

1/ 4/ 6/  
8/ 13/ 14/  
15/ 16/



G4 Rubystone Red

1/ 4/ 6/  
13/ 15/



F2 Maritime Blue

1/ 4/ 6/  
7/ 13/ 15/



## SPECIAL COLORS

---

In addition to the standard exterior colors, Porsche designers have developed an exclusive line of extraordinary custom colors. Any exterior color may be combined with any interior color or special accessories.

A realistic impression of the various possible combinations may be obtained by holding the interior and finish color samples next to one another.



50 *Satin Black Metallic*



56 *Marine Blue Metallic*



52 *Cassis Red Metallic*



57 *Violet Blue Metallic*



53 *Granite Green Metallic*



58 *Tahoe Blue Metallic*



54 *Lagoon Green Metallic*



59 *Turquoise Metallic*



55 *Zermatt Silver Metallic*

CUSTOM INTERIORS: EXAMPLES...

COLORS FOR PORSCHE CABRIOLET TOPS



Leather interior combining Cobalt Blue and Light Gray (standard colors).



Supple Leather Seats in Classic Gray (a standard color).



Black



Dark Blue



Leather interior in Carrara Gray (a custom color).



Optional sport seats in Classic Gray (a standard color).



Cobalt Blue

Dr. Ing. h.c. F. Porsche  
Aktiengesellschaft  
Porschestra. 42  
D-7000 Stuttgart 40

The colors and color patterns illustrated here may differ from the originals, due to characteristics of the color printing process.



Leather interior in Cashmere Beige, Supple Leather seats, shift Boot (standard colors).



Magenta

Printed in Germany  
WVK 127 421 92 VMK 8/91



LEATHER

MULTI-COLOR

"PORSCHE" FABRIC

CONSOLE

COVER

7

Light Gray

Light Gray

Light Gray

Cobalt Blue

Cobalt Blue



8

Magenta

Magenta

Magenta

Magenta

Magenta



9

Light Gray

Light Gray

Light Gray

Magenta

Magenta



10

Classic Gray

Classic Gray

Classic Gray

Classic Gray

Cobalt Blue



11

Classic Gray

Classic Gray

Classic Gray

Classic Gray

Magenta



12

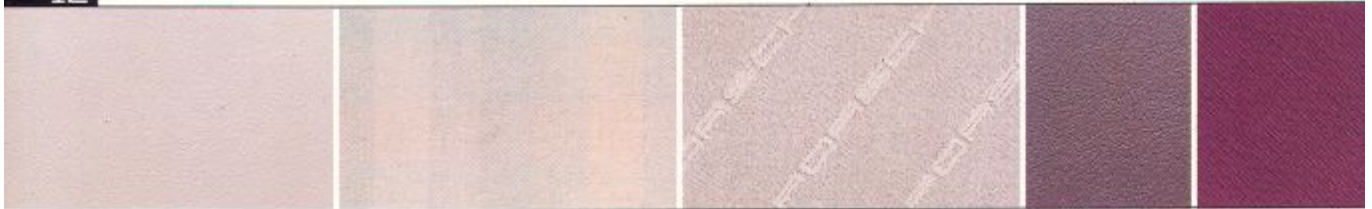
Light Gray

Light Gray

Light Gray

Classic Gray

Magenta



13

Marine Blue

Marine Blue

Marine Blue

Marine Blue

Dark Blue





# 968 911 928

LEATHER

MULTI-COLOR

"PORSCHE" FABRIC

CONSOLE

COVER

1

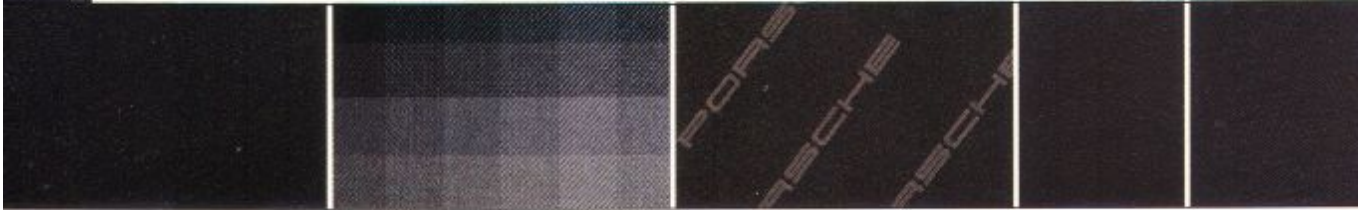
*Black*

*Black*

*Black*

*Black*

*Black*



2

*Light Gray*

*Light Gray*

*Light Gray*

*Black*

*Black*



3

*Cashmere Beige*

*Cashmere Beige*

*Cashmere Beige*

*Black*

*Black*



4

*Classic Gray*

*Classic Gray*

*Classic Gray*

*Classic Gray*

*Black*



5

*Light Gray*

*Light Gray*

*Light Gray*

*Classic Gray*

*Black*



6

*Cobalt Blue*

*Cobalt Blue*

*Cobalt Blue*

*Cobalt Blue*

*Cobalt Blue*





**968**

**911**

**928**

CUSTOM LEATHER

COVER

**14** *Matador Red*

*Black*



**15** *Carrara Gray*

*Black*



**16** *Sherwood Green*

*Black*

