



MERCÉDÈS • BENZ

THE THREE-POINT STAR MARKS A WORLD-FAMED CAR

“MERCÉDÈS-BENZ”

THE Name of “MERCÉDÈS-BENZ” signifies a complete range of Cars. Two of the oldest and most celebrated Factories in the World are “Mercédès and Benz”, both of which have a world wide reputation for highest quality and reliability.

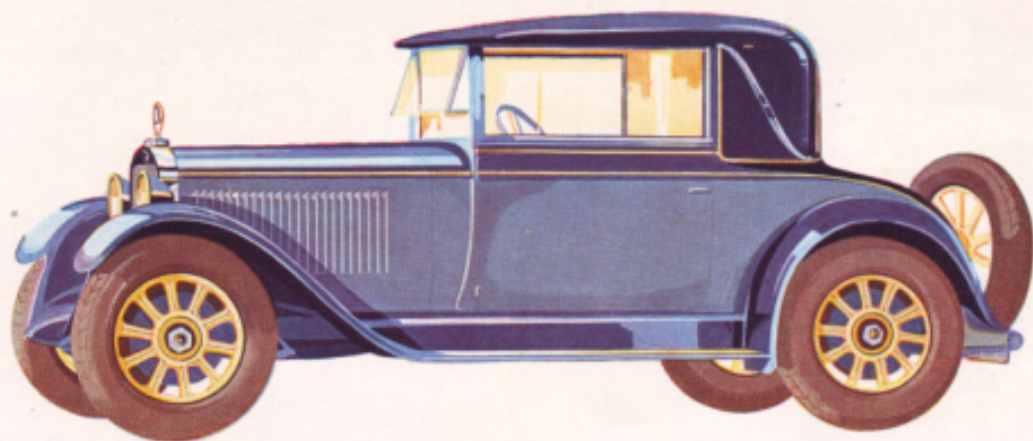
When these two Factories amalgamated, with their long experience, the co-operation of their Engineers, together with their high standard of workmanship, also the real and active sales organisation (operating all over the World), enabled a still higher standard to be attained, in a Car that can be described as THE VERY BEST.

It is the object of the “MERCÉDÈS-BENZ” Works to build the most reliable Car in the World.

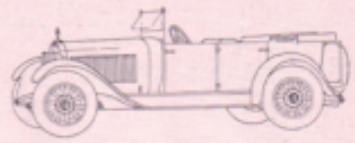
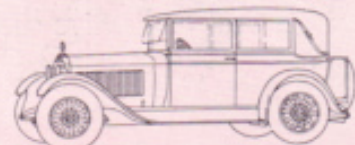
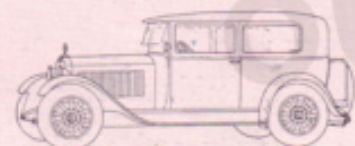
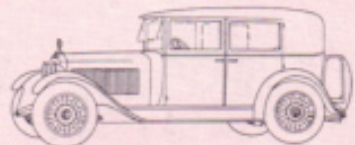
With their six latest Models they are in a position to offer a range of Cars that will fulfil all demands. Each Car is a speciality in its class, and all are of the highest quality.

The most experienced Motorists in all Countries drive our Cars, as they know there is no better guarantee for a first-class production than those that bear the mark

“MERCÉDÈS-BENZ”



2 LITERS MERCÉDÈS-BENZ



The new small "Mercedes-Benz" Six-Cylinder Model whilst embodying the usual high-class workmanship and materials associated with this make is designed for the Owner-Driver, giving him a Car of first class performance and reliability at a very reasonable price.

The Engine is fitted with a seven-bearing crankshaft, side-by-side valves, air filter, oil purifier, thermostat, and possessing a wonderful elasticity.

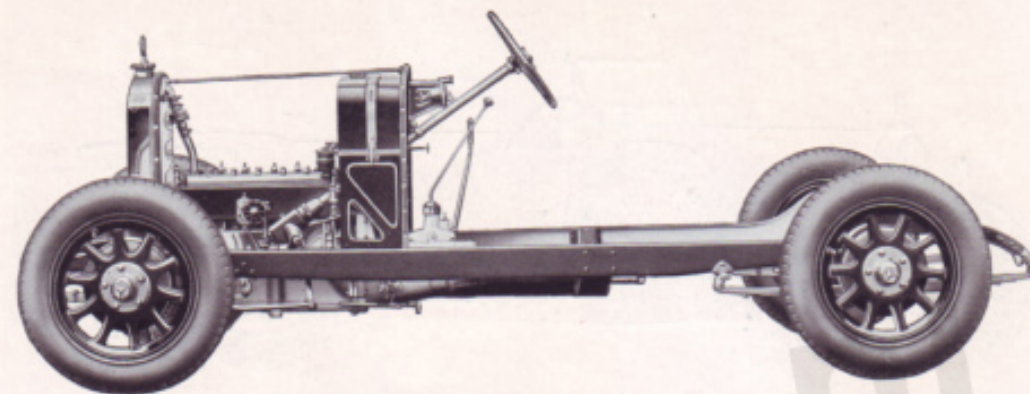
The flexibility enables very smooth running, very little gear changing, and with its quick acceleration and hill climbing power is designed to give average speeds only attainable by other Cars of much higher Horse Power.

For a Car of this HP., its running costs are exceptionally low.

One of the greatest drawbacks of the modern Car has been the question of chassis lubrication.

CENTRAL CHASSIS LUBRICATION. — This has been entirely overcome by the provision of the **MERCÉDÈS-BENZ PATENT CENTRAL LUBRICATION SYSTEM**, which is driven from the gear box, and automatically lubricates at regular intervals through a distributor all the necessary lubrication points on the chassis, i. e., shackles, steering, etc. thus overcoming one of the greatest annoyances of Motorists, viz. having to go round the chassis with a grease gun, or to fill grease caps from time to time.

For the Owner-Driver it would be impossible to find a more practical and economical Car.



2 LITERS MERCÉDÈS-BENZ

Engine: Six cylinder, unit construction with transmission gear, seven bearing crankshaft, three point suspension.

Cylinder Dimensions: Bore 65 mm ($2\frac{9}{16}$ "), stroke 100 mm ($3\frac{15}{16}$ ").

Tax: £ 16.

Cylinders: Monobloc cast iron integral with upper half of crankshaft housing. The cylinder head is detachable.

Valves: Side-by-side valves, adjustable valve lifters, inlet and exhaust valves interchangeable.

Camshaft: Driven by helical gear at rear of engine.

Carburettor: Zenith triple diffuser.

Ignition: Bosch dynamo supplying current through a distributor situated at the rear end of the cylinder head. Automatic advance.

Cooling: Mercedes-Benz honeycomb radiator, with water circulating pump and fan.

Lubrication: Forced feed.

Transmission: Single dry plate clutch. Three speeds and reverse, one cardan joint. Spiral bevel drive to rear axle.

Suspension: Springs semi-elliptic, front and rear.

Steering Gear: Worm type, with shock absorbing device.

Braking: Four-wheel fully compensated system directly applied by pedal with minimum of effort. Hand lever applies rear brakes independently. All brakes of internal expanding type and completely enclosed.

Fuel Feed & Storage: A tank of about 12 gallons capacity fitted under scuttle.

Electrical Equipment: Bosch lighting and starting with 12 volt accumulator. 2 head lamps, 2 dashboard lamps, Bosch horn.

Instrument Board: Fitted with speedometer, 8-day clock, switch box, oil indicator and petrol gauge.

Tool Equipment: A complete set of tools is supplied with each car.

Wheels: Steel plate spoke wheels for Balloon tyres.

Tyres: 30" x 5 $\frac{1}{4}$ ".

Wheelbase: 2810 mm ($110\frac{5}{8}$ ").

Track: 1420 mm (56").

Ground Clearance: 190 mm ($7\frac{1}{2}$ ").

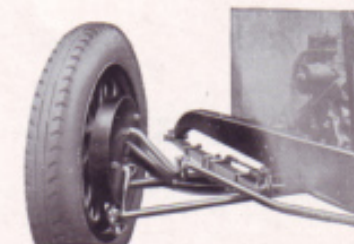
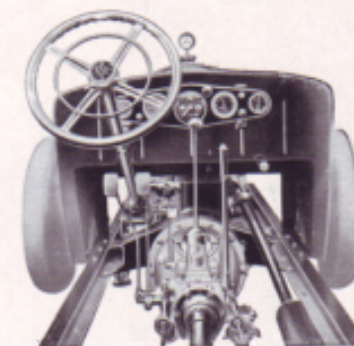
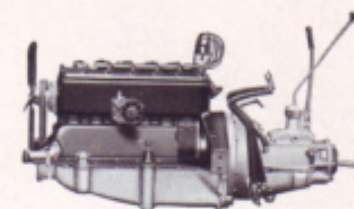
Available Chassis Length: 2350 mm ($92\frac{1}{4}$ ").

Weight of Chassis: 800 kg (15.7 cwt.) approximately.

Overall Length: 4060 mm (160").

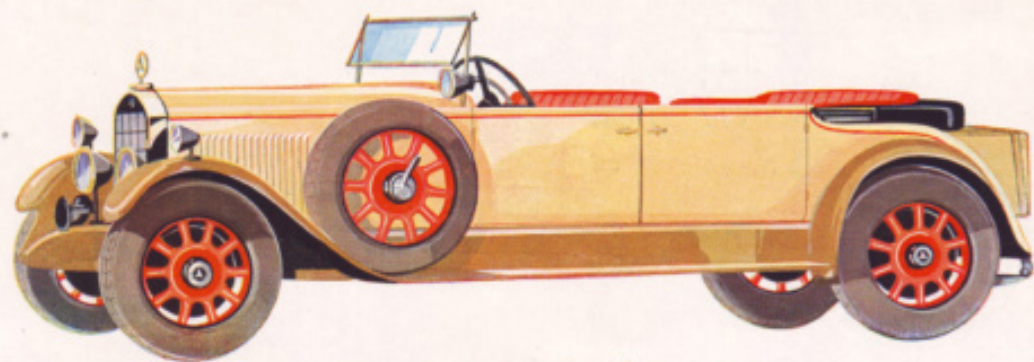
Overall Width: 1620 mm ($66\frac{1}{4}$ ").

Note: The above particulars are subject to alteration without notice.



MERCÉDÈS-BENZ THE HIGH-QUALITY CAR

OF WORLDS OLDEST AUTOMOBILE FACTORIES



3 LITERS MERCÉDÈS-BENZ

The new medium-powered Six-Cylinder Mercédès Model, constitutes an up-to-date general purposes Car of unequalled value.

The Six-Cylinder Engine possesses a high degree of adaptability under all running conditions.

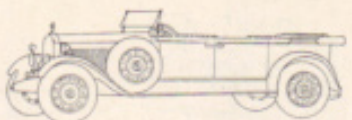
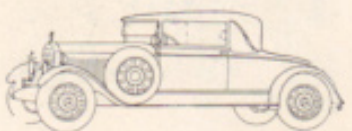
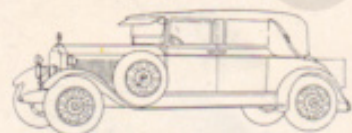
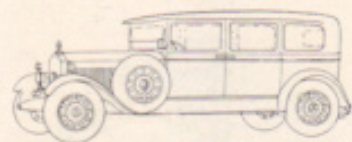
It is fitted with a seven-bearing crankshaft, side-by-side valves, air filter, oil purifier, thermostat, heating, etc., all of which makes for the greatest flexibility, including excellent acceleration and immense reserve of power.

With its low gear ratio it can be driven with a minimum of gear changing, and allows of high average speeds being attained over long distances and very fine hill climbing, and it is an ideal Car for Town or Country use.

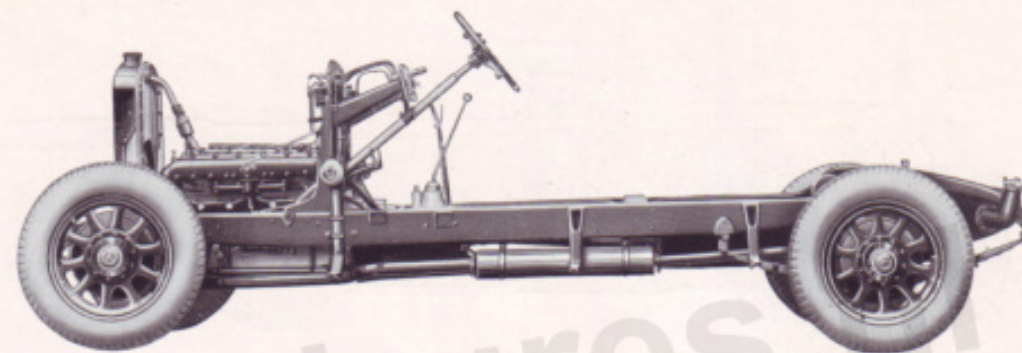
The noiseless working of the engine, good braking, lively acceleration, springing and steadiness on the road, together with its reliability makes it a characteristic production of the "Mercédès-Benz" Factory.

This Model is fitted with CENTRAL CHASSIS LUBRICATION, which is driven from the gear box, and automatically lubricates at regular intervals through a distributor all the necessary lubrication points on the chassis, i. e. shackles, steering, etc., thus overcoming one of the greatest annoyances of Motorists, viz. having to go round the chassis with a grease gun, or to fill grease caps from time to time.

Balloon tyres are also fitted, shock absorbers, and all the most up-to-date improvements as are embodied in Cars of this class.



MERCÉDÈS-BENZ THE HIGH-QUALITY CAR



3 LITERS MERCÉDÈS-BENZ

Engine: Six cylinder, unit construction with transmission gear, three-point suspension.

Cylinder Dimensions: Bore 76 mm (3"), stroke 115 mm (4 1/2").

Tax: £ 21.

Cylinders: Monobloc cast iron integral with upper half of crankshaft housing, the cylinder head is detachable.

Valves: All valves are situated on one side with adjustable valve lifters. Inlet and exhaust valves are interchangeable.

Camshaft: Driven by helical gear at rear of engine.

Carburettor: Zenith triple diffuser.

Ignition: Bosch dynamo supplying current through a distributor situated at the rear end of the cylinder head. Timing regulated by hand from steering wheel.

Cooling: Mercedes-Benz honeycomb radiator with water circulating pump and fan.

Lubrication: Forced feed.

Transmission: By dry multiple-disc clutch, four-speeds and reverse, direct drive being on fourth. One cardan joint. Final drive by spiral bevel gears.

Suspension: Springs semi-elliptic, front and rear.

Steering Gear: Worm type with shock absorbing device.

Braking: Four-wheel fully compensated system directly applied by pedal with

minimum of effort. Hand lever applies rear brakes independently. All brakes of internal expanding type and completely enclosed.

Fuel Feed and Storage: A tank of about 19 gallons capacity is fitted at rear, and fuel is raised to carburettor by Autovac system.

Electrical Equipment: Bosch lighting and starting with 12 volt accumulator. 2 head lamps, 2 side lamps and tail lamp, dashboard lamp, Bosch horn.

Instrument Board: Fitted with speedometer, 8-day clock, switch box, oil and petrol gauges.

Tool Equipment: A complete set of tools is stored in special compartments inside the chassis.

Wheels: Detachable steel plate or wire wheels for Balloon straight-sided tyres.

Tyres: 32" x 6.2".

Wheelbase: 3430 mm (135").

Track: 1420 mm (56").

Ground Clearance: 205 mm (8 1/16").

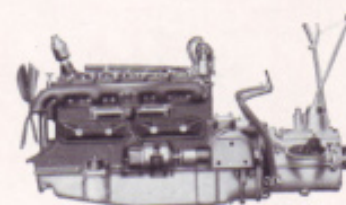
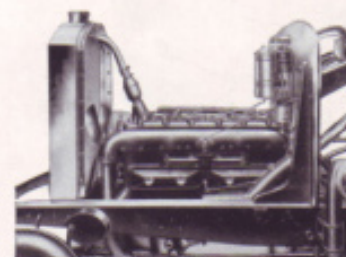
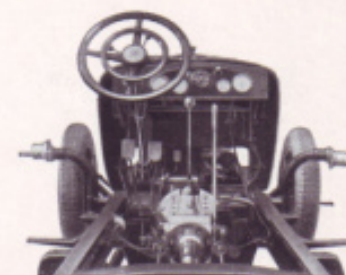
Available Chassis Length: 2750 mm (108 3/4").

Weight of Chassis: 1100 kg (21.6 cwt.) approximate.

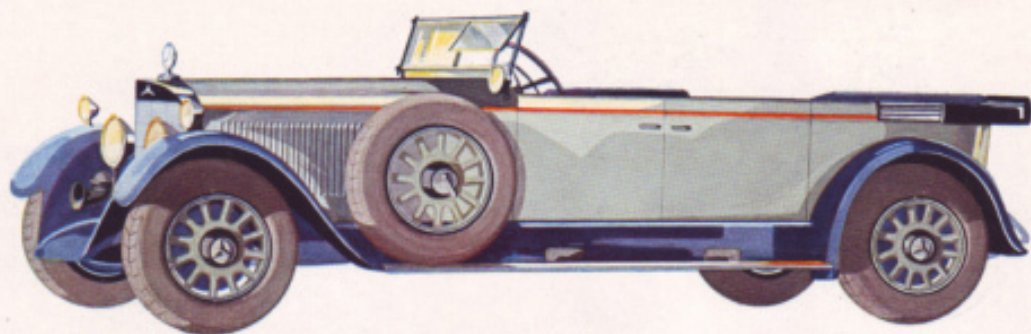
Overall Length: 4650 mm (183 1/16").

Overall Width: 1760 mm (69 3/4").

Note: The above particulars are subject to alteration without notice.



OF WORLDS OLDEST AUTOMOBILE FACTORIES



4 LITERS MERCÉDÈS-BENZ

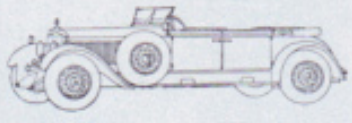
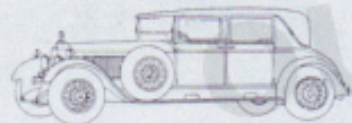
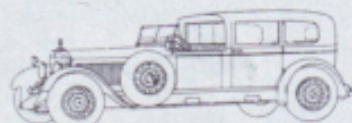
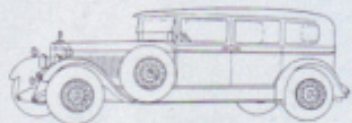
A medium powered and comfortable Car of the highest workmanship, materials and performance, suitable for Town or long distances.

Its Six-Cylinder Supercharged Engine imparts wonderful acceleration and high speeds, flexibility, wonderful hill climbing powers all combine to making this model a high average speed car.

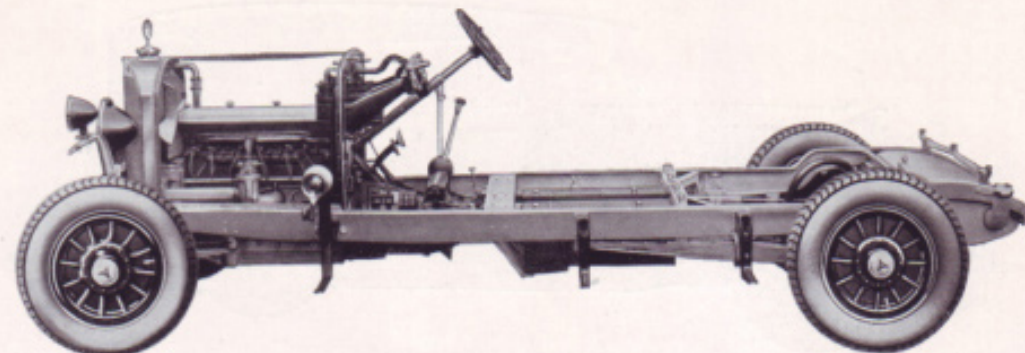
The strong construction of the frame permits of 7-Seater Bodies being fitted, and provision for heavy luggage.

Its reliability and steadiness are in accordance with the most exacting requirements.

This model occupies a place by itself in the class of medium powered Cars.



MERCÉDÈS-BENZ THE HIGH-QUALITY CAR



4 LITERS MERCÉDÈS-BENZ

Engine: 6 Cylinder type, fitted with "Mercedes-Benz" Patent Super-Charger. Engine and transmission gear unit construction. Distinctive simplicity of appearance. Three point suspension.

Bore: 80 mm (3 1/8"). - **Stroke:** 130 mm (5 1/8").
Piston displacement: 3.92 litres (239 cu. in.).

Power without Super-Charger: 70 HP.
Power with Super-Charger: 100 HP.

Cylinders: Cast in one with the upper part of the crankshaft housing. Fitted with liners. Detachable cylinder-heads.

Valves and Camshaft: Of inverted vertical type, fitted in the cylinder-head. One camshaft driven by noiseless worm wheels. All enclosed with lubrication.

Carburettor: "Mercedes-Benz" Patent Automatic, of special design for Super-Charger.

Ignition: "Bosch" High Tension type, with timing control on the steering wheel.

Cooling: "Mercedes-Benz" honeycomb radiator, slightly pointed, nickel plated with centrifugal circulation pump. Fan with flexible drive from the camshaft.

Lubrication: Automatic circulation lubrication with force pump and distributor, and supplementary fresh oil feed pump.

Electrical Equipment: "Bosch" electric lighting and starter with battery, 2 head lights, 2 side-lights, dashboard lamp and tail lamp, double note horn.

Steering Gear: Of screw type, with shock absorbing device, can be fitted on the right or on the left side as required.

Power Transmission: Dry plate multiple disc clutch. Chromnickel-steel change speed gear, working in a gate. Aluminium gear box fitted with 4 speeds forward, and 1 reverse. Direct drive on fourth. One Cardan joint. Rear axle shafts driven by helical bevel gears.

Springing: Semi-elliptical springs in front. Rear cantilever.

Brakes: Foot-brake: Internal expanding type acting on the front and rear wheels. Hand-brake: Internal expanding type acting on the rear wheels independently of the foot-brake. Large brake drums. These brakes are worked with extraordinary ease, and are both fitted with compensating devices.

Wheels: Wooden or wire spoke wheels, of removable type. May be fitted with rims for straight side tires, if required.

Tyres: 33 x 6.75".

Wheel Base: 3630 mm (about 142 7/8").

Gauge: 1430 mm (about 56 3/8").

Clearance above the Road Level: About 220 mm (8 5/8").

Available Length of Chassis: 2900 mm (114 3/16").

Available Width of Chassis: 1050 mm (41 5/16").

Weight of Chassis with Tyres: About 1450 kg (1 ton 9 cwt.).

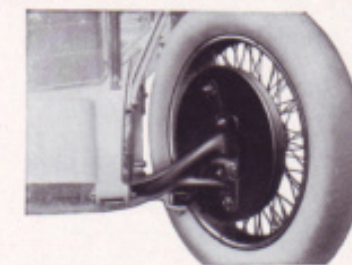
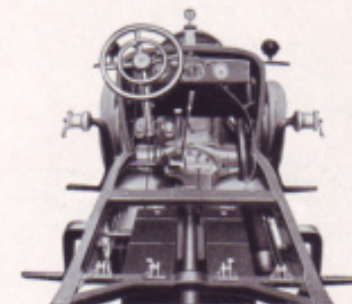
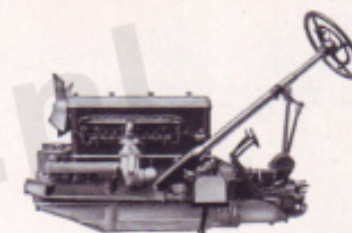
Fuel Storage and Feed Arrangements:

A tank of about 110 litres = about 24 Imp. gall. = about 29 Americ. gall. capacity with Gauge, is fitted at the end of the Chassis. Automatic fuel pump with auxiliary tank, of special design for the Super-Charger engine, fitted on the dashboard.

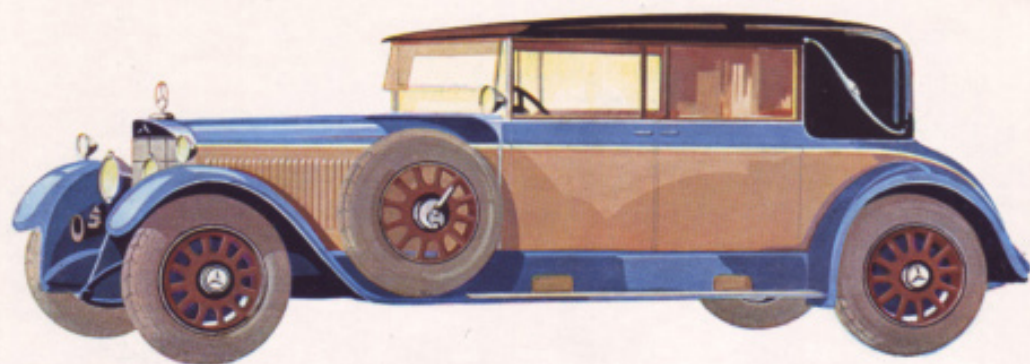
Dashboard: Fitted with speed indicator, a day clock, switch box, oil control lamp.

Tool Equipment: A complete set of Tools, for which accommodation is provided inside the chassis, with starting handle, lifting jack, and tire pump.

Spare Wheel Carriers: Fitted on each side of the chassis, with 2 spare wheels.



OF WORLDS OLDEST AUTOMOBILE FACTORIES



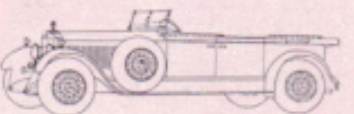
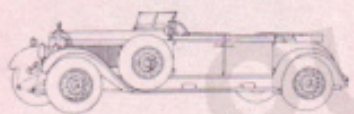
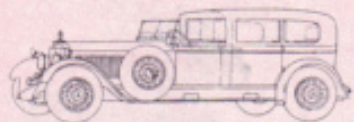
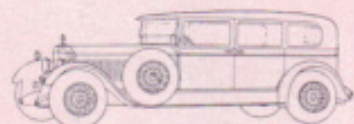
6 LITERS MERCÉDÈS-BENZ

A highly efficient Car of special class. Its six-cylinder Engine of 6-litres possesses the finest qualities under all running conditions.

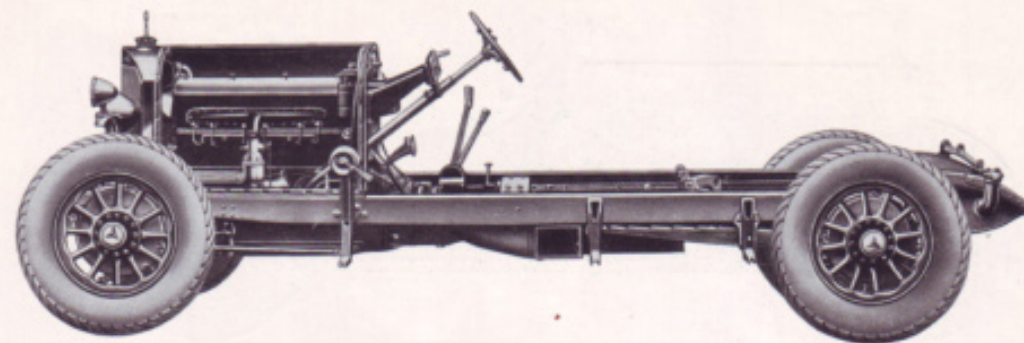
It is fitted with a supercharger, which can be engaged at slow engine revolutions. This supercharger imparts a higher degree of flexibility, the performance of which is unequalled by any other make of Car of similar Horse Power, combined with very fine hill climbing, fast speeds, its slow running qualities enables it to be handled very simply when in Town.

The reserve of power gives to the Car the highest possible reliability, and the maximum power of the engine which is increased by the use of the Supercharger, allows of very high speeds being attained.

This Model undoubtedly stands out in a class by itself.



MERCÉDÈS-BENZ THE HIGH-QUALITY CAR



6 LITERS MERCÉDÈS-BENZ

Engine: 6 Cylinder type, fitted with "Mercedes-Benz" Patent Super-Charger. Engine and transmission gear unit construction. Distinctive simplicity of appearance. Three point suspension.

Bore: 94 mm ($3\frac{11}{16}$). — **Stroke:** 150 mm ($5\frac{7}{8}$).

Cylinder capacity: 6.24 l. (380.5 cu inch).

Power without Super-Charger: 100 HP.

Power with Super-Charger: 140 HP.

Cylinders: Cast in one with the upper part of the crankshaft housing. Fitted with liners. Detachable cylinder-heads.

Valves and Camshaft: Of inverted vertical type, fitted in the cylinder-head. One camshaft driven by noiseless worm wheels. All enclosed with lubrication.

Carburettor: "Mercedes-Benz" Patent Automatic, of special design for Super-Charger.

Ignition: "Bosch" High Tension type, with timing control on the steering wheel.

Cooling: "Mercedes-Benz" honeycomb radiator, slightly pointed, nickel plated with centrifugal circulation pump. Fan with flexible drive from the camshaft.

Lubrication: Automatic circulation lubrication with force pump and distributor, and supplementary fresh oil feed pump.

Electrical Equipment: "Bosch" electric lighting and starter with battery, 2 headlights, 2 side-lights, dashboard lamp and tail lamp, double note horn.

Steering Gear: Of screw type, with shock absorbing device, can be fitted on the right or on the left side as required.

Power Transmission: Dry plate multiple disc clutch. Chromnickel-steel change speed gear, working in a gate. Aluminium gear box fitted with 4 speeds forward, and 1 reverse. Direct drive on fourth. One Cardan joint. Rear axle shafts driven by helical bevel gears.

Springing: Semi-elliptical springs in front. Rear cantilever.

Brakes: Foot-brake. Internal expanding type acting on the front and rear wheels. Hand-brake: Internal expanding type acting on the rear wheels independently of the foot-brake. Large brake-drums. These brakes are worked with extraordinary ease, and are both fitted with compensating devices.

Wheels: Wooden or wire spoke wheels, of removable type. May be fitted with rims for straight side tyres, if required.

Tyres: 33x6.75.

Wheel Base: 3750 mm. (About $147\frac{5}{8}$ ").

Gauge: 1430 mm. (About $56\frac{3}{8}$ ").

Clearance above the Road Level: About 220 mm. ($8\frac{5}{8}$ ").

Available Length of Chassis: 2900 mm. ($114\frac{3}{16}$ ").

Available Width of Chassis: 1050 mm. ($41\frac{5}{16}$ ").

Weight of Chassis with Tyres: About 1550 kg (30.6 cwt.).

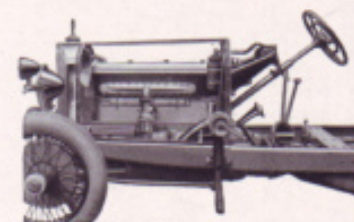
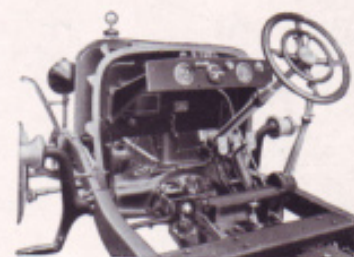
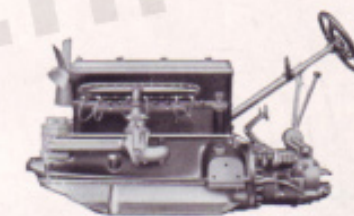
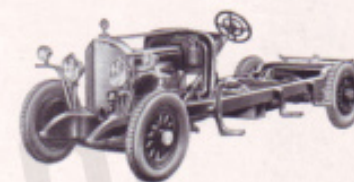
Fuel Storage and Feed Arrangements:

A tank of about 110 litres—about 24 Imp. gall. = about 32.5 Americ. gall. capacity with Gauge, is fitted at the end of the Chassis. Automatic fuel pump with auxiliary tank, of special design for the Super-Charger engine, fitted on the dashboard.

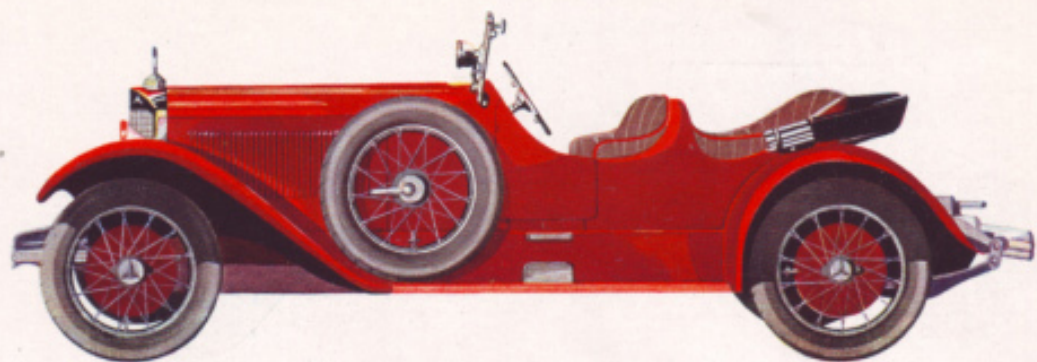
Dashboard: Fitted with speed indicator, 8 day clock, switch box, oil control lamp.

Tool Equipment: A complete set of Tools, for which accommodation is provided inside the chassis with starting handle, lifting jack, and tyre pump.

Spare Wheel Carriers: Fitted on each side of the chassis, with 2 spare wheels.



OF WORLDS OLDEST AUTOMOBILE FACTORIES



MERCÉDÈS-BENZ "MODEL K"

The fastest Touring Car in the World.

This model which has a shortened wheel base compared with the standard six-litre type is of special design to comply with the requirements of the Owner Driver who desires a fast Touring Car for long distance travelling.

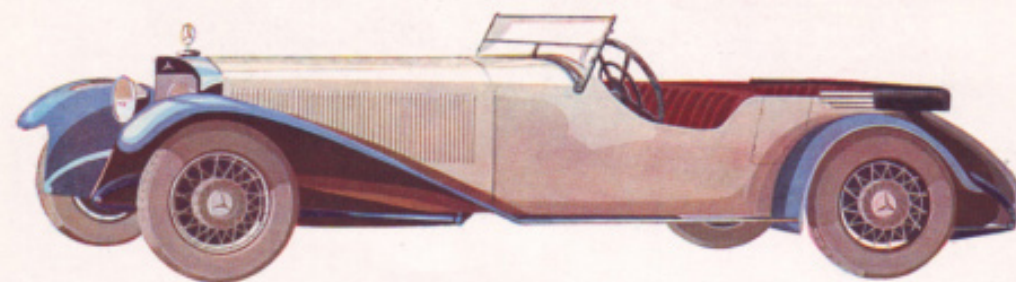
The maximum speed of this Car is considerably higher than that of the model with the long wheel base, and the greatest attention has been paid to all details thereby ensuring absolute reliability.

The chassis is shorter and the steering column is longer and raked more. The attention paid to the distribution of weight ensures the car being absolutely steady at the highest speeds.

This Car possesses all the distinctive qualities of the speed of the thoroughbred, yet it is so flexible and docile in traffic that it is extremely simple to handle.



MERCÉDÈS-BENZ THE HIGH-QUALITY CAR



MERCÉDÈS-BENZ "MODEL S"

The fastest Sports Car in the world.

The many years experience of the "Mercedes-Benz" factory in the manufacture of Sports Cars, combined with their well-known workmanship and materials used has enabled them to construct this super sports model.

The Model possesses a high maximum speed, a power of acceleration which was considered unattainable hitherto, wonderful hill climbing and the highest possible degree of reliability. Compared with the engines of other Sports Cars this supercharged six-cylinder is particularly robust, and is built for hard work. In spite of the enormous power developed none of its parts are stressed unduly.

The Model constitutes an ideal high performance Car for sporting Owner Drivers.

It has put up a number of records in the Sports Classes, such as the International kilometre record, the sports record of the Klausen Hill Climbs, which is one of the most difficult contests in Europe, and in the

1927 German Grand Prix

against considerable international competition obtained

FIRST, SECOND & THIRD PLACES.



OF WORLDS OLDEST AUTOMOBILE FACTORIES



1



4



2



5



3

THE MERCÉDÈS-BENZ WORKS



1. Untertürkheim
2. Mannheim
3. Sindelfingen
4. Gaggenau
5. Marienfelde

